



**REGIONAL SPECIALISED METEOROLOGICAL CENTRE-TROPICAL CYCLONES, NEW DELHI
TROPICAL WEATHER OUTLOOK**

DEMS-RSMC TROPICAL CYCLONES NEW DELHI DATED 08.11.2023

TROPICAL WEATHER OUTLOOK FOR NORTH INDIAN OCEAN (THE BAY OF BENGAL AND THE ARABIAN SEA) VALID FOR NEXT 168 HOURS ISSUED AT 0600 UTC OF 08.11.2023 BASED ON 0300 UTC OF 08.11.2023.

BAY OF BENGAL:

SCATTERED LOW AND MEDIUM CLOUDS WITH EMBEDDED INTENSE TO VERY INTENSE CONVECTION LAY OVER SOUTH BAY OF BENGAL. SCATTERED LOW AND MEDIUM CLOUDS WITH EMBEDDED MODERATE TO INTENSE CONVECTION LAY OVER WESTCENTRAL BAY OF BENGAL ADJOINING ANDHRA PRADESH COAST & ANDAMAN SEA.

PROBABILITY OF CYCLOGENESIS (FORMATION OF DEPRESSION) DURING NEXT 168 HRS:

24 HOURS	24-48 HOURS	48-72 HOURS	72-96 HOURS	96-120 HOURS	120-144 HOURS	144-168 HOURS
NIL	NIL	NIL	NIL	NIL	NIL	NIL

ARABIAN SEA:

UNDER THE INFLUENCE OF YESTERDAYS CYCLONIC CIRCULATION OVER SOUTHEAST AND ADJOINING EASTCENTRAL ARABIAN SEA, A LOW PRESSURE AREA FORMED OVER EASTCENTRAL ARABIAN SEA AT 0000 UTC AND IT PERSISTED OVER THE SAME REGION AT 0300 UTC OF TODAY, THE 08TH NOVEMBER 2023. ASSOCIATED CYCLONIC CIRCULATION EXTENDING UPTO 3.1 KM ABOVE MEAN SEA LEVEL PERSISTS. IT IS LIKELY TO MOVE NEARLY WESTWARDS AND BECOME LESS MARKED OVER THE SAME REGION DURING NEXT 24 HOURS.

ASSOCIATED SCATTERED LOW AND MEDIUM CLOUDS WITH EMBEDDED INTENSE TO VERY INTENSE CONVECTION LAY OVER EASTCENTRAL ARABIAN SEA IN ASSOCIATION WITH LOW LEVEL CIRCULATION OVER THE AREA. MINIMUM CLOUD TOP TEMPERATURE IS MINUS 77 DEG CEL.

SCATTERED LOW AND MEDIUM CLOUDS WITH EMBEDDED INTENSE TO VERY INTENSE CONVECTION LAY OVER EASTCENTRAL ARABIAN SEA OFF SOUTH KONKAN-GOAKARNATAKA COASTS, SOUTHEAST ARABIAN SEA OFF KERALA COAST. SCATTERED LOW AND MEDIUM CLOUDS WITH EMBEDDED MODERATE TO INTENSE CONVECTION LAY OVER REST OF EASTCENTRAL & REST OF SOUTH ARABIAN SEA AND LAKSHADWEEP ISLANDS AREA, COMORIN AREA AND ISOLATED WEAK TO MODERATE CONVECTION LAY OVER NORTH ARABIAN SEA.

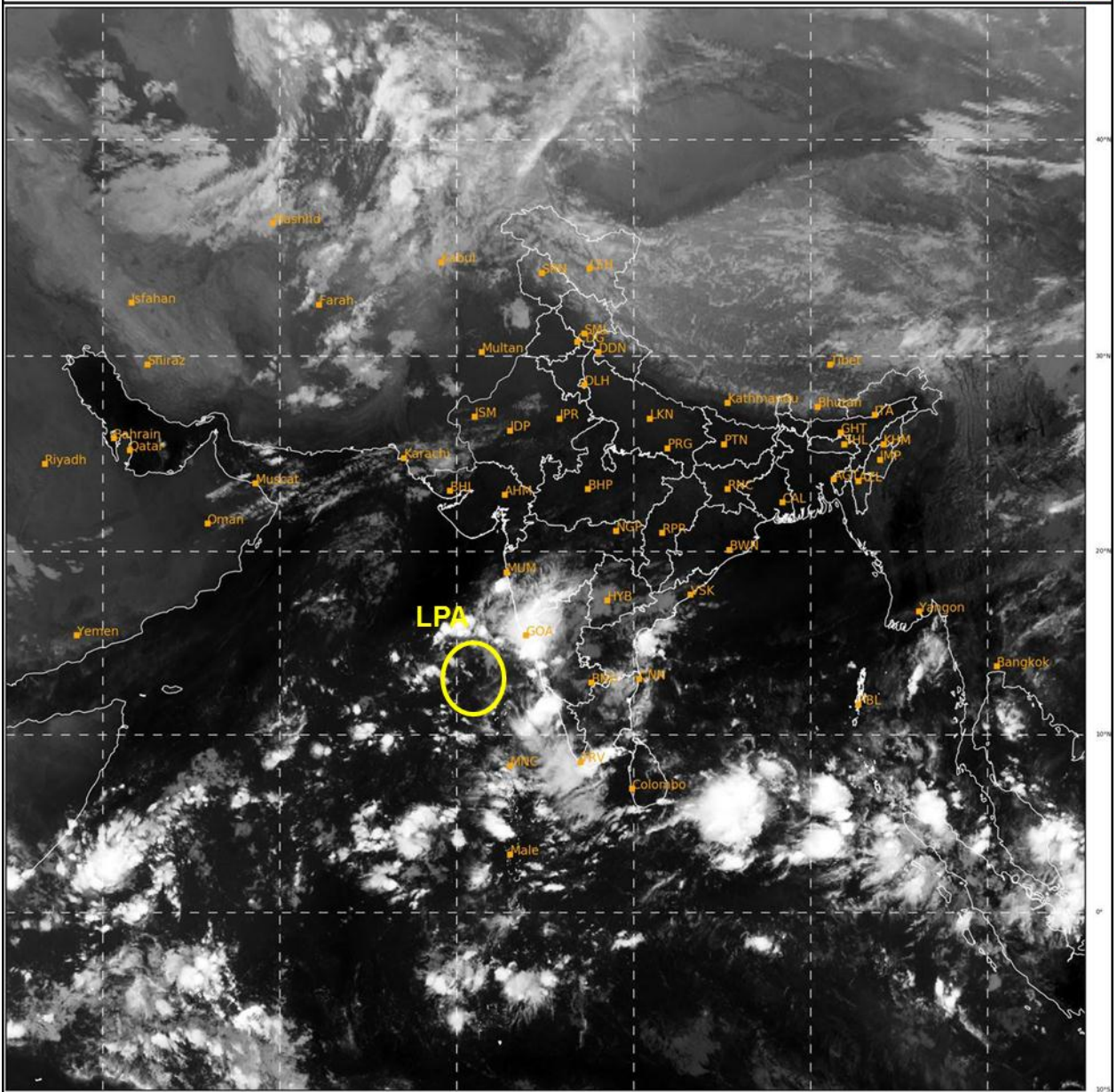
PROBABILITY OF CYCLOGENESIS (FORMATION OF DEPRESSION) DURING NEXT 168 HRS:

24 HOURS	24-48 HOURS	48-72 HOURS	72-96 HOURS	96-120 HOURS	120-144 HOURS	144-168 HOURS
NIL	NIL	NIL	NIL	NIL	NIL	NIL

Remarks: NIL

SAT : INSAT-3D IMG
IMG_TIR1 10.8 um
LIC Mercator

08-11-2023/(0300 to 0326) GMT
08-11-2023/(0830 to 0856) IST



483

925

IMD, DELHI

Cloud distribution: (a) Isolated: <25%, Scattered:25-50%, Broken: 51-75%, Solid:>75%, Convection Intensity: (a) Weak: Cloud Top Temperature (CTT) >-25°C, (b) Moderate: CTT: - 25°C to -40°C, (c) Intense: CTT: - 41°C to -70°C and (d) Very Intense: : Less than -70°C
PROBABILITY OF CYCLOGENESIS (FORMATION OF DEPRESSION):NIL: 0%, LOW: 1-33%, , MODERATE: 34-66% AND HIGH: 67-100%
This is a guidance Bulletin for WMO/ESCAP Panel Member countries. Visit respective National websites for Country specific Bulletins